



McLAUGHLIN'S
XXX COFFEE



McLAUGHLIN'S
XXX COFFEE



Greetings of different Nations, one of a series of twelve.

Scotch.

Willie
McLaughlin's

XXXX Roasted Coffee.

SOLD ONLY IN 1 POUND PACKAGES.

The glazing on this Coffee does the settling, and is made of **Corn Starch** and **Reclarified Sugar**, therefore perfectly healthful.

This saves you the **cost of eggs**, which is equal to from **5 to 10 cents** for every pound used.

McLaughlin's XXXX Gerösteter Kaffee

Nur in 1 Pfund Packeten verkauft.

Die Glasur dieses Kaffees bewirkt das Setzen; dieselbe ist aus **Kornstärke** und **abgeklärtem Zucker** hergestellt und deshalb der Gesundheit zuträglich.

Man erspart dadurch die **Ausgaben für Eier**, was gleichbedeutend ist mit einem Gewinn von **5 bis 10 Cents** bei jedem verbrauchten Pfund.

Willie
1 Pound Coffee makes 30 Cups.

1 Doz. Eggs average cost 12 Cts.

It costs to settle a pound of Coffee as follows:

A FAMILY USING AT A MEAL

2 Cups Coffee,	-	15 Cents a pound.
4 " "	- -	7 1/2 " "
6 " "	-	5 " "
8 " "	- -	3 3/4 " "
10 " "	-	3 " "
12 " "	- -	2 1/2 " "

The glazing on **McLaughlin's XXXX Coffee** does the settling the same as eggs, and saves you the **cost of eggs** as shown above. The glazing is made of **Corn Starch** and **Reclarified Sugar**, therefore perfectly healthful.

**W. F. McLAUGHLIN & CO.,
CHICAGO.**

This card is one of a series of twelve, showing how the different Nations greet each other.



AFRICA.

McLAUGHLIN'S
XXXX COFFEE.



Jerusalem

McLAUGHLIN'S
XXXX COFFEE.

GREETING.

We all rejoice at the great prosperity for our country ; at the same time everybody admires economy, and desires the best things for the least money.

One of the most difficult things to supply and give satisfaction to a family is coffee. One purchase will please ; another from the same barrel or bag will cause the greatest dissatisfaction. The reason is it is not uniform. No one is responsible for bulk roasted coffee. They all look alike, but no one can vouch for the drinking qualities, and coffee is to please the stomach, not the eye.

One pound of McLaughlin's XXXX Coffee will make thirty cups of choice coffee, or about one cent per cup. To an ordinary sized family, the advance will not cost to exceed five cents per day. How little do we think of spending ten times this amount on ribbons, candy, whisky or tobacco, and not say anything about it.

In recommending you to use McLaughlin's XXXX Coffee, in 1 pound packages, we do so knowing it must please you and give entire satisfaction, as every care is given it in blending the different coffees that compose it.

It is the strongest fine flavored coffee in market.

It is put up under our firm name, and depends upon itself to make friends with every family—(and it never fails), always *uniform and reliable* ; try it.

Sold only in One Pound Packages.

W. F. McLAUGHLIN & CO.,

82, 84, 86, 88, 90 and 92 South Water St.,

IMPORTERS AND ROASTERS OF COFFEE.

CHICAGO, ILL.

Willie

One of these in Every Package of

McLAUGHLIN'S XXXX Roasted Coffee.

SOLD ONLY IN 1 POUND PACKAGES.

The glazing on this Coffee does the settling, and is made of **Corn Starch and Reclarified Sugar**, therefore perfectly healthful.

This saves you the **cost of eggs**, which is equal to from **5 to 10 cents** for every pound used.

This card is one of a series of **National Pictures**. Any one sending us the fronts of twelve wrappers of XXXX Coffee, with a two cent stamp, to pay the postage, will be mailed a set without any printing, in shape of an album. This series is the finest in the United States, and will be an ornament in every house.

These twelve wrappers must be sent to us before **July 1st, 1889.**

W. F. McLAUGHLIN & CO.

Willie

WEST INDIES



McLAUGHLIN'S
XXXX COFFEE

AUSTRALIA



McLAUGHLIN'S
XXXX COFFEE

It costs to settle one pound of coffee with eggs as follows:

A FAMILY USING AT EACH MEAL

4	cups of coffee,	$\frac{1}{2}$	egg to settle,	costs	$3\frac{1}{4}$	cts. a pound.
6	"	"	$\frac{1}{2}$	"	"	$2\frac{1}{2}$ " "
8	"	"	1	"	"	$3\frac{1}{4}$ " "
10	"	"	1	"	"	3 " "

This is figured at 12 cents a dozen for eggs and 30 cups coffee to a pound.

The glazing on McLaughlins XXXX Coffee does the settling and is made of Cornstarch and reclarified Sugar, therefore perfectly healthful.

Coffee is a vegetable fibre containing oil known as caffeine. This oil makes the taste and smell of coffee and evaporates quickly after the coffee is roasted. When the oil has evaporated nothing remains but a woody substance. The glazing on XXXX seals the pores of the coffee and prevents the oil from evaporating. If you wish to buy coffee, buy XXXX which is glazed. If you want to buy wood, ask for an unglazed coffee that has lost most of the oil.

W. F. McLAUGHLIN & CO.,
CHICAGO.

One of these Cards in Every Package.

Willie

THE MILWAUKEE LITHO. & ENGR. CO.

Willie

It costs to settle one pound of coffee with eggs as follows:

A FAMILY USING AT EACH MEAL

4	cups of coffee,	$\frac{1}{2}$	egg to settle,	costs	$3\frac{1}{4}$	cts. a pound.
6	"	"	$\frac{1}{2}$	"	"	$2\frac{1}{2}$ " "
8	"	"	1	"	"	$3\frac{1}{4}$ " "
10	"	"	1	"	"	3 " "

This is figured at 12 cents a dozen for eggs and 30 cups coffee to a pound.

The glazing on McLaughlins XXXX Coffee does the settling and is made of Cornstarch and reclarified Sugar, therefore perfectly healthful.

Coffee is a vegetable fibre containing oil known as caffeine. This oil makes the taste and smell of coffee and evaporates quickly after the coffee is roasted. When the oil has evaporated nothing remains but a woody substance. The glazing on XXXX seals the pores of the coffee and prevents the oil from evaporating. If you wish to buy coffee, buy XXXX which is glazed. If you want to buy wood, ask for an unglazed coffee that has lost most of the oil.

W. F. McLAUGHLIN & CO.,
CHICAGO.

One of these Cards in Every Package.

THE MILWAUKEE LITHO. & ENGR. CO.



McLAUGHLIN'S
XXXX COFFEE



McLAUGHLIN'S
XXXX COFFEE

Malay Islands

Willie

IMPORTANT TO COFFEE DRINKERS.

From 3 to 5 cents a pound saved by buying McLAUGHLIN'S XXXX Roasted Coffee (sold only in 1 pound packages). You cannot get as good drinking Coffee, loose, for less than the above difference in price. All enterprising merchants know this and offer it freely, considering the best interests of their customers and knowing that its merits will increase their sales and in the end make them more money. Some dealers look only at the immediate results and urge you to buy bulk Coffee, on which they can make large profits. Do not be influenced by any interested party, but judge for yourself. Give our Coffee a chance on its merit as a drink, and you will admit it is better than any other package Coffee and as good as you can buy loose, for the above difference. Sold by the principal grocers of the city.

W. F. McLAUGHLIN & CO.,

Importers, Jobbers and Roasters of Coffee,

82, 84, 86 and 88 South Water St.,

CHICAGO.

One of these in Every Package of

McLAUGHLIN'S XXXX Roasted Coffee.

SOLD ONLY IN 1 POUND PACKAGES.

The glazing on this Coffee does the settling, and is made of **Corn Starch and Reclarified Sugar**, therefore perfectly healthful.

This saves you the **cost of eggs**, which is equal to from **5 to 10 cents** for every pound used.

This card is one of a series of **National Pictures**. Any one sending us the fronts of twelve wrappers of XXXX Coffee, with a two cent stamp, to pay the postage, will be mailed a set without any printing, in shape of an album. This series is the finest in the United States, and will be an ornament in every house.

These twelve wrappers must be sent to us before July 1st, 1889.

Willie W. F. McLAUGHLIN & CO.



McLAUGHLIN'S
XXXX COFFEE



McLAUGHLIN'S
—X·X·X·X—
COFFEE

War Ship Series

Chinese War Junk.



Willie
CHINESE WAR JUNK.

A Chinese War Junk, as shown on this card, will very soon be a thing of the past, as the Celestials have discovered its clumsiness and slowness, compared with vessels of Western nations. The junk is often of large dimensions, and, notwithstanding its slowness, has repeatedly proved itself a very seaworthy craft on voyages extending even to America and Europe. It is usually ornamented with a very elaborate and fantastic bow, which, with its gaudy and peculiar coloring, both in hull and sails, makes it a very picturesque object in Chinese ports.

This card is one of a series of 15, showing the peculiar war ships of the world. Any one sending us the fronts of fifteen wrappers of the XXXX Coffee, and a TWO-CENT STAMP to pay postage, will be mailed a beautifully colored picture of the "Battle of the Monitor and Merrimac." This picture is 16 inches high and 20 inches long, without any printing on it, and will be an ornament in any parlor. Wrappers must be sent before February 1st, 1890.

The glazing on McLaughlin's XXXX Coffee does the settling and is made of corn starch and re-clarified sugar—therefore, perfectly healthful. The glazing seals the pores of the coffee and prevents the oil from evaporating. This costs us $\frac{1}{4}$ of a cent a pound, but saves the consumer ten times that amount. We buy all our XXXX Coffee from the Brazilian planters, direct, thereby saving the importers, jobbers and commission men's profits. The immense success of XXXX Coffee proves that our policy of giving the consumer the cheapest coffee for the money and selling an immense quantity, is the best.

W. F. McLAUGHLIN & CO.,
CHICAGO.

(ONE OF THESE CARDS IN EACH PACKAGE)



McLAUGHLIN'S
XXXX COFFEE.



DRINK
McLAUGHLIN'S XXXX COFFEE.

WILL HE BITE?

THIS IS ONE OF A SET OF FIFTEEN CARDS

XXX THE BEST COFFEE ON EARTH!

THE IMMENSE SALES SHOW
THE PEOPLE KNOW IT IS THE BEST.

The glazing on McLAUGHLIN'S XXXX COFFEE DOES THE SETTLING, and is made of corn starch and re-clarified sugar, therefore, perfectly healthful. The glazing SEALS THE PORES of the coffee & prevents the COFFEE OIL FROM EVAPORATING. — This costs us 1/4 of a cent a pound, but saves the customer ten times that amount. — We buy all our coffees from the coffee planters direct, and have houses in RIO DE JANEIRO AND SANTOS, thereby saving the importers, jobbers and commission men's profits. We give all this saving to the consumer, and say, without any fear of contradiction, that we are putting up coffee from 5 to 10 cents a pound finer quality than any other package coffee in the market. The immense success of XXXX COFFEE proves that our policy of giving the consumer the cheapest coffee for the money and selling an immense quantity is the best.

W. F. McLAUGHLIN & Co.,
RIO DE JANEIRO. * CHICAGO. * SANTOS.

(A PICTURE CARD IN EVERY PACKAGE.)

15 Designs in this set.

OVER.

TWO IMPORTANT QUESTIONS ANSWERED.

1st. Why is McLaughlin's
XXXX COFFEE Glazed?

2d. What is Glazing composed of?

Coffee being a vegetable, consequently porous, the glazing seals the pores and keeps the Coffee for months as fresh as the day it comes from the roaster.

THIS IS WHY IT IS GLAZED.

The glazing is made from Corn Starch and Reclarified Sugar, nothing can be more nutritious and healthful.

We account for the immense increase in our business to having our own houses in Rio de Janeiro and Santos, saving the intermediate or second-hand profit, and putting all this saving in the quality of our Coffee.

W. F. McLAUGHLIN & CO.,
Rio de Janeiro. CHICAGO. Santos.

A Beautiful Picture Card in every Package.

15 Designs in this Set.

(OVER.)

DRINK
McLAUGHLIN'S XXXX COFFEE.



GATHERING EGGS IN GRANDPA'S BARN

THIS IS ONE OF A SET OF FIFTEEN CARDS.

COPYRIGHT, 1901.

McLAUGHLIN BROTHERS, N. Y.

DRINK
McLAUGHLIN'S
XXXX COFFEE!



THIS IS ONE OF A SET OF SIXTEEN CARDS.

XXXX

The Best Coffee on Earth!

THE IMMENSE SALES

SHOW

THE PEOPLE KNOW IT IS THE BEST.

The glazing on McLAUGHLIN'S XXXX COFFEE **does the settling** and is made of corn starch and reclarified sugar—therefore perfectly healthful.

The glazing **seals the pores** of the coffee and prevents the **coffee oil from evaporating**.

This costs us $\frac{1}{4}$ of a cent per pound, but saves the consumer ten times that amount.

We have branch houses in Rio de Janeiro and Santos to buy our coffees directly from the planters; this saves us the importer's, jobber's and commission men's profit.

We give all this saving to the consumer, and say, without any fear of contradiction, that we are putting up coffee worth from 5 to 10 cents a pound more than any other package coffee on the market.

The immense success of **XXXX Coffee** proves that our policy of giving the consumer the cheapest coffee for the money, and selling an immense quantity, is the best.

W. F. McLAUGHLIN & CO.,

CHICAGO.

Rio de Janeiro.

Santos.

PICTURE CARD IN EVERY PACKAGE.

15 Designs in this Set.

(OVER.)

XXXX

THE BEST COFFEE ON EARTH!

THE IMMENSE SALES SHOW THE PEOPLE
KNOW IT IS THE BEST.

The glazing on McLAUGHLIN'S XXXX COFFEE does the settling and is made of corn starch and reclarified sugar—therefore perfectly healthful.

The glazing seals the pores of the coffee and prevents the coffee oil from evaporating.

This costs us $\frac{1}{4}$ of a cent per pound, but saves the consumer ten times that amount.

We have branch houses in Rio de Janeiro and Santos to buy our coffees directly from the planters; this saves us the importer's, jobber's and commission men's profit.

We give all this saving to the consumer, and say, without any fear of contradiction, that we are putting up coffee worth from 5 to 10 cents a pound more than any other package coffee on the market.

The immense success of **XXXX Coffee** proves that our policy of giving the consumer the cheapest coffee for the money and selling an immense quantity, is the best.

W. F. McLAUGHLIN & CO.

CHICAGO.

RIO DE JANEIRO.

SANTOS.

(A Picture Card in every Package.)

16 Designs in this set.

[OVER.]

McLAUGHLIN'S
XXXX
COFFEE
IS IN THIS SET.



Our House

XXXX

The Best Coffee on Earth!

THE IMMENSE SALES SHOW THE PEOPLE
KNOW IT IS THE BEST.

Chicago Head of the West.

XXXX Head of the West.

XXXX Biggest Seller in the U. S.

**XXXX has the Chicago push, and gets to the
right spot.**

When we get the World's Fair, come and see us.
If we do not get the Fair, come and see us.

The glazing on McLAUGHLIN'S XXXX COFFEE does the settling, and is made of corn starch and re-clarified sugar—therefore, perfectly healthful. The glazing seals the pores of the coffee and prevents the oil from evaporating. This costs us $\frac{1}{4}$ of a cent a pound, but saves the consumer ten times that amount. We buy all our XXXX Coffee from the coffee planters direct, thereby saving the importers, jobbers and commission men's profits. We give all this saving to the consumer, and say without any fear of contradiction, that we are putting up coffee from 5 to 10 cents a pound finer quality than any other package or loose coffee on the market. The immense success of XXXX Coffee proves that our policy of giving the consumer the cheapest coffee for the money and selling an immense quantity, is the best.

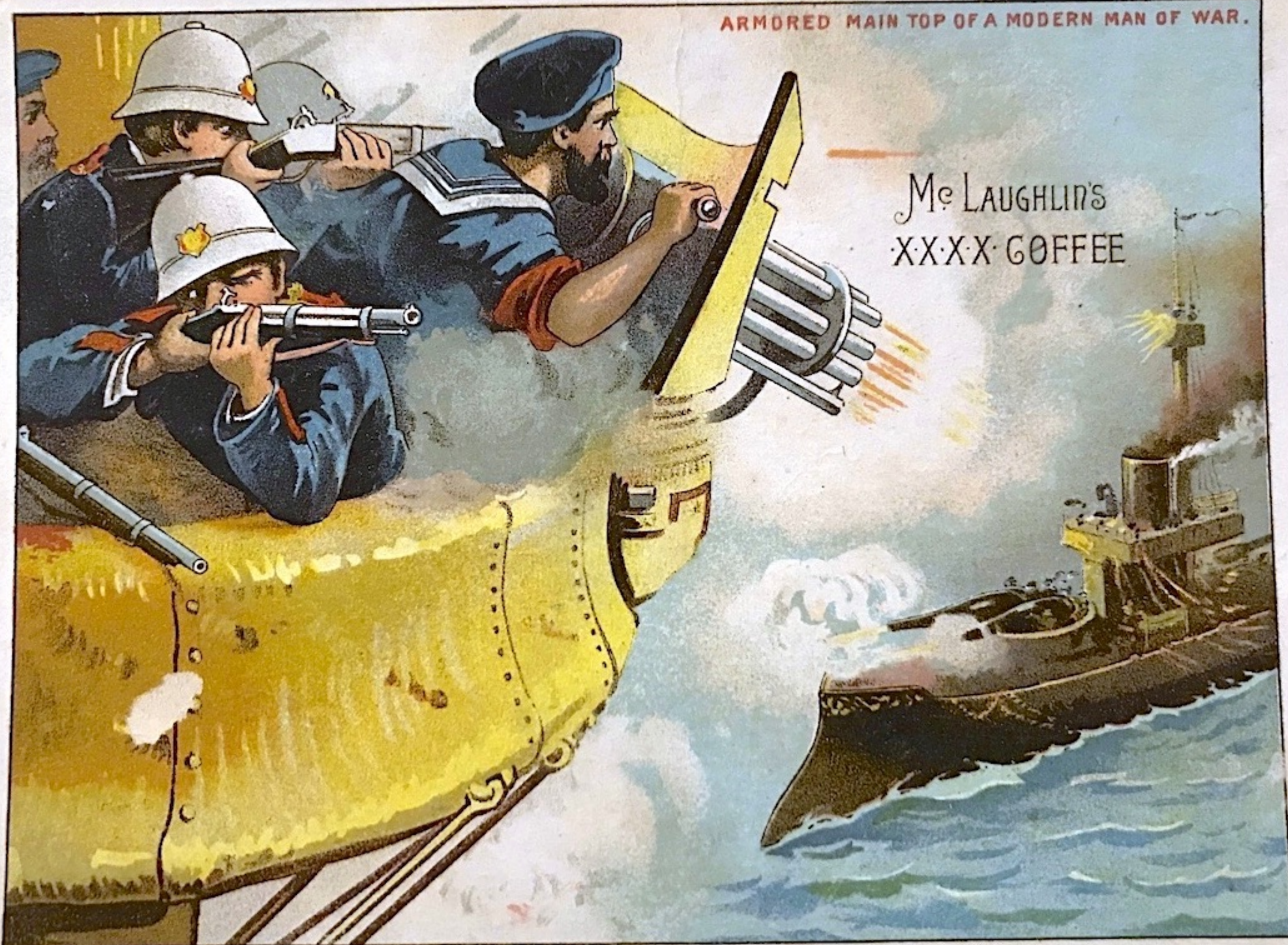
W. F. McLAUGHLIN & CO.,

CHICAGO.

(A PICTURE CARD IN EVERY PACKAGE.)

(OVER.)

W. F. McLaughlin



COPYRIGHTED 1889.

Armored Main Top of a Modern Man-of-War.

This is a spirited picture in the main top of a modern man-of-war, showing the means of offense and defense on this class of vessels. The marines on the main top are picking off their opponents on the enemy's vessel. The machine gun shown in the picture is used with deadly effect on the deck of the opposing vessel, particularly on the vessels whose guns are not protected by armor. The destruction of life is probably greater from the machine guns than the results from the heaviest gun built in modern times.

This card is one of a series of 18, showing the peculiar war ships of the world. Any one sending us the fronts of 15 wrappers of the XXXX Coffee, and a TWO-CENT STAMP to pay postage, will be mailed a beautifully colored picture of the "Battle of the Monitor and Merrimac." This picture is 16 inches high and 20 inches long, without any printing on it, and will be an ornament in any parlor. Wrappers must be sent before February 1st, 1890.

The glazing on McLaughlin's Coffee does the settling, is made of corn starch and re-clarified sugar, and perfectly healthful. Coffee is a vegetable fibre containing oil, known as caffeine. This oil makes the taste and smell of coffee, and evaporates quickly after the coffee is roasted.

The older the coffee the less oil remains. If much of the oil has evaporated, you get what is called stale coffee, which is not what you want at any price. The glazing on XXXX seals the pores of the coffee, and prevents the oil from evaporating. Use XXXX, and you will always have fresh coffee.

W. F. McLAUGHLIN & CO.,
CHICAGO.

One of these Cards in each package.

COSACK & COMPANY BUFFALO & CHICAGO



THIS IS ONE OF A SET OF FIFTEEN CARDS.

THE ANIMAL TRAINER

DRINK
Mc LAUGHLIN'S XXXX COFFEE.

GERALDSON BROTHERS, N.Y.

XXXX The Best Coffee on Earth!

THE IMMENSE SALES
SHOW

THE PEOPLE KNOW IT IS THE BEST.

The glazing on McLAUGHLIN'S XXXX COFFEE does the settling and is made of corn starch and reclarified sugar—therefore perfectly healthful.

The glazing seals the pores of the coffee and prevents the coffee oil from evaporating.

This costs us $\frac{1}{4}$ of a cent per pound, but saves the consumer ten times that amount.

We have branch houses in Rio de Janeiro and Santos to buy our coffees directly from the planters; this saves us the importer's, jobber's and commission men's profit.

We give all this saving to the consumer, and say, without any fear of contradiction, that we are putting up coffee worth from 5 to 10 cents a pound more than any other package coffee on the market.

The immense success of XXXX Coffee proves that our policy of giving the consumer the cheapest coffee for the money, and selling an immense quantity, is the best.

W. F. McLAUGHLIN & CO.,
CHICAGO.

Rio de Janeiro.

Santos.

PICTURE CARD IN EVERY PACKAGE.

15 Designs in this Set.

(OVER.)



EGYPTIAN DONKEYS.

COPYRIGHTED 1892 BY

THE KNAPP CO., LITH. N.Y.



TRELLIS OF WISTARIA.

COPYRIGHTED 1892 BY

THE KNAPP CO., LITH. N.Y.

Willie F.
TWO IMPORTANT QUESTIONS ANSWERED.

- 1st. Why is McLaughlin's
XXXX COFFEE Glazed?
2d. What is Glazing Composed of?

Coffee being a vegetable, consequently porous, the glazing seals the pores and keeps the Coffee for months as fresh as the day it comes from the roaster.

THIS IS WHY IT IS GLAZED.

The glazing is made from Corn Starch and Reclarified Sugar, nothing can be more nutritious and healthful.

We account for the immense increase in our business to having our own houses in Rio de Janeiro and Santos, saving the intermediate or second-hand profit, and putting all this saving in the quality of our Coffee.

W. F. McLAUGHLIN & Co.,
CHICAGO.

RIO DE JANEIRO.

SANTOS.

A Beautiful Picture Card in every Package.

16 DESIGNS IN THIS SET.

(OVER.)

TWO IMPORTANT QUESTIONS ANSWERED.

- 1st. Why is McLaughlin's
XXXX COFFEE Glazed?
2d. What is Glazing Composed of?

Coffee being a vegetable, consequently porous, the glazing seals the pores and keeps the Coffee for months as fresh as the day it comes from the roaster.

THIS IS WHY IT IS GLAZED.

The glazing is made from Corn Starch and Reclarified Sugar, nothing can be more nutritious and healthful.

We account for the immense increase in our business to having our own houses in Rio de Janeiro and Santos, saving the intermediate or second-hand profit, and putting all this saving in the quality of our Coffee.

W. F. McLAUGHLIN & Co.,
CHICAGO.

RIO DE JANEIRO.

SANTOS.

A Beautiful Picture Card in every Package.

16 DESIGNS IN THIS SET.

(OVER.)

Over 100 Premiums Free!!

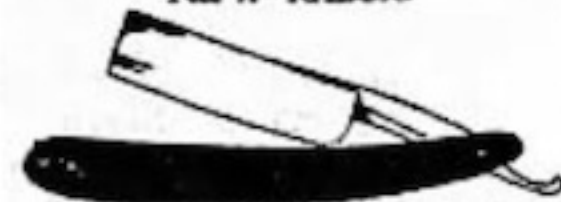
WITH

M'LAUGHLIN'S XXXX COFFEE

Complete premium list and instructions in every package. McLaughlin's XXXX Coffee is worth 5 cents per pound more than any other packaged coffee and costs no more. It is always uniform. Try this Coffee and you will never use any other. McLaughlin's XXXX Coffee sold only in 1 lb. sealed packages.

W. F. M'LAUGHLIN & CO., Chicago, Ill.

No. 1. RAZOR.

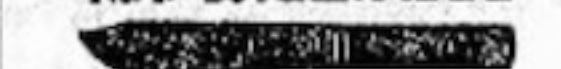


This razor we know from the most practical experience to be the best. Read the following: "This is to certify that I have used the two razors offered by McLaughlin & Co. as premiums, and shave my best customers with them, and I guarantee them to be first-class razors and far superior to the razors given as premiums by other package coffee houses."

AARON KETTELSON,
Barber, North LaSalle, Chicago.
Attested to by J. NAWMAN VAN FLEET,
Notary Public for Cook County,
State of Illinois.
Dec. 13, 1898.

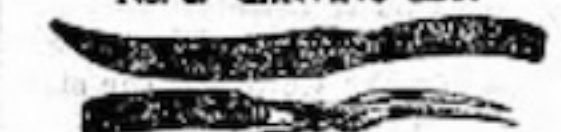
A razor sent post-paid on receipt of a 3c. postage stamp and 30 "Mela" cut from the face of XXXX coffee wrappers.

No. 2. BUTCHER'S KNIFE.



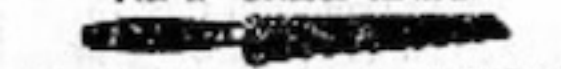
Very useful for kitchen use. Made of the best quality steel, rosewood handle. Sent post-paid on receipt of a 3c. stamp and 30 "Mela" cut from the face of XXXX coffee wrappers.

No. 3. CARVING SET.



Knife and fork, rosewood handle; length of blade eight inches. Made of crackle-steel. Sent post-paid on receipt of a 3c. postage stamp and 30 "Mela" cut from the face of XXXX coffee wrappers.

No. 4. BREAD KNIFE.



To cut be without our combination bread knife and saw. Suitable for slicing bread, cutting meats and hams. The back is used for sawing the bone. Blade is a twelve inch, made of crackle steel. Sent post-paid on receipt of a 3c. postage stamp and 30 "Mela" cut from the face of XXXX coffee wrappers.

No. 5. Child's Knife and Fork Set.



Three handsome pieces of artistic workmanship. Handles are heavily enameled, perfect in every respect, and packed in fancy lined box. Sent post-paid on receipt of a 3c. stamp and 30 "Mela" cut from the face of XXXX coffee wrappers.

No. 6. SPOONS.



Three handsome large, ornate spoons with a double design; enameled handles and made of first-class material. These six in a package. Sent post-paid on receipt of a 3c. postage stamp and 30 "Mela" cut from the face of XXXX coffee wrappers.

No. 7. HOUSE SCALE.



With scoop. A most practical scale for all purposes; hand-enameled, enameled and stipped. Weighs 25 lbs. by use. Occupies but little space and can be regulated by turning the brass screw on top. Sent by express, charges prepaid, on receipt of a 3c. postage stamp and 30 "Mela" cut from the face of XXXX coffee wrappers. When ordering be sure to give your nearest express office as well as your post-office.

No. 8. HAIR CLIPPER.



Full nickel plated, cuts 1/4 of an inch; concealed spring; two extra springs with each clipper. Sent post-paid on receipt of a 3c. postage stamp and 30 "Mela" cut from the face of XXXX coffee wrappers.

No. 9. LADY'S PEN KNIFE.



Two blades made of fine steel; fancy pearl handle; highly polished. Sent post-paid on receipt of a 3c. postage stamp and 30 "Mela" cut from the face of XXXX coffee wrappers.

No. 10. Gentleman's Knife.



Made of fine quality steel; stag or ebony handle; steel blade; highly polished; small pen and large spear blade. Sent post-paid on receipt of a 3c. postage stamp and 30 "Mela" cut from the face of XXXX coffee wrappers.

No. 11. JACK KNIFE.



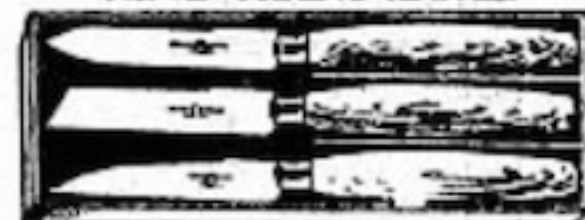
Ebony or rosewood handle; steel blade; highly polished; pen and spear blade. Sent post-paid on receipt of a 3c. postage stamp and 30 "Mela" cut from the face of XXXX coffee wrappers.

No. 19. BAND RING.



This is a handsome hand chased and raised gold wedding ring of very pretty and unique pattern; cannot be told from solid gold; will stand throughout test. It is made on the same principle as the Swiss Gold watch case and is warranted for five years. Measure your size on the ring scale. Sent post-paid on receipt of a 3c. postage stamp and 30 "Mela" cut from the face of XXXX coffee wrappers.

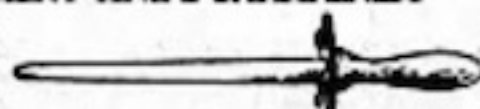
No. 12. PARING KNIVES.



One complete set consisting of three different paring knives; best quality steel blade; enameled handle; no better paring knife made. Sent post-paid on receipt of a 3c. postage stamp and 30 "Mela" cut from the face of XXXX coffee wrappers.

No. 13. EMERY KNIFE SHARPENER.

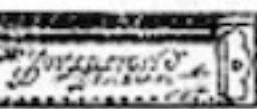
Has steel guard and wooden handle; emery fastened with steel. Finishing full length of sharper. Sent post-paid on receipt of a 3c. postage stamp and 30 "Mela" cut from the face of XXXX coffee wrappers.



No. 14. SHEARS. Eight inches long; made of fine quality steel, evenly tempered and will give the best of satisfaction as a cutter. Sent post-paid on receipt of a 3c. postage stamp and 30 "Mela" cut from the face of XXXX coffee wrappers.

No. 15. SCISSORS. Six inches long, made of fine quality steel; evenly tempered and will give the best of satisfaction. Sent post-paid on receipt of a 3c. postage stamp and 30 "Mela" cut from the face of XXXX coffee wrappers.

No. 16. HARMONICA. Best harmonica that will please the young as well as the old folks. A beautiful, silver reed sharp containing thirty-two holes; single covers; if properly played will sound like a church organ. Sent post-paid on receipt of a 3c. postage stamp and 30 "Mela" cut from the face of XXXX coffee wrappers.



No. 17. FEATHER BOA.



These elegant boas are just what every lady needs. They are now the rage in Paris and New York. Made of the finest feathers. Sent post-paid on receipt of a 3c. postage stamp and 30 "Mela" cut from the face of XXXX coffee wrappers.

No. 18. Lady's Belt Buckle.



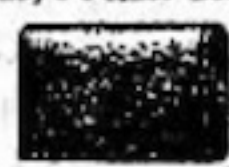
Suitable for each on belt, of silver work, cluster center richly enameled in colors of gold. Sent post-paid on receipt of a 3c. postage stamp and 30 "Mela" cut from the face of XXXX coffee wrappers.

No. 20. Parisian Diamond Ring.



This small glove ring is now all the rage. Set with a genuine Parisian diamond. This stone is an excellent imitation of the genuine diamond, and its brilliancy cannot be equalled by anything but the genuine diamond; settings are 14K gold and warranted for 5 years' wear. Measure your size on ring scale. Sent post-paid on receipt of a 3c. postage stamp and 30 "Mela" cut from the face of XXXX coffee wrappers.

No. 21. Lady's Pocket Book.



Made of the very best and grain one piece leather with ornamental embossing. Had two regular and one card case compartments. Curved carrying ornament leather lined. Sent post-paid on receipt of a 3c. postage stamp and 30 "Mela" cut from the face of XXXX coffee wrappers.

No. 22. COIN PURSE.

Made of fine kid leather with gold nickel riveted frame and is full leather lined. Sent post-paid on receipt of a 3c. postage stamp and 30 "Mela" cut from the face of XXXX coffee wrappers.



No. 23. HAT PINS.

These are very stylish pins, set with jewels very brilliant and showy; will not bend or break; two plain and one with a very artistic addition in any lady's jewelry case. Sent post-paid on receipt of a 3c. postage stamp and 30 "Mela" cut from the face of XXXX coffee wrappers.

No. 24. Neck-Tie Pins.

Ladies or gentlemen cannot get too many pretty tie or shirt pins. These illustrated here are the very latest; set with Parisian brilliants.

Shows very brilliant and band some; designs horse-shoe or cluster; made of the very best rolled plain cutlery and warranted. Either of these sent post-paid on receipt of a 3c. postage stamp and 30 "Mela" cut from the face of XXXX coffee wrappers.



NOT IN A TRUST